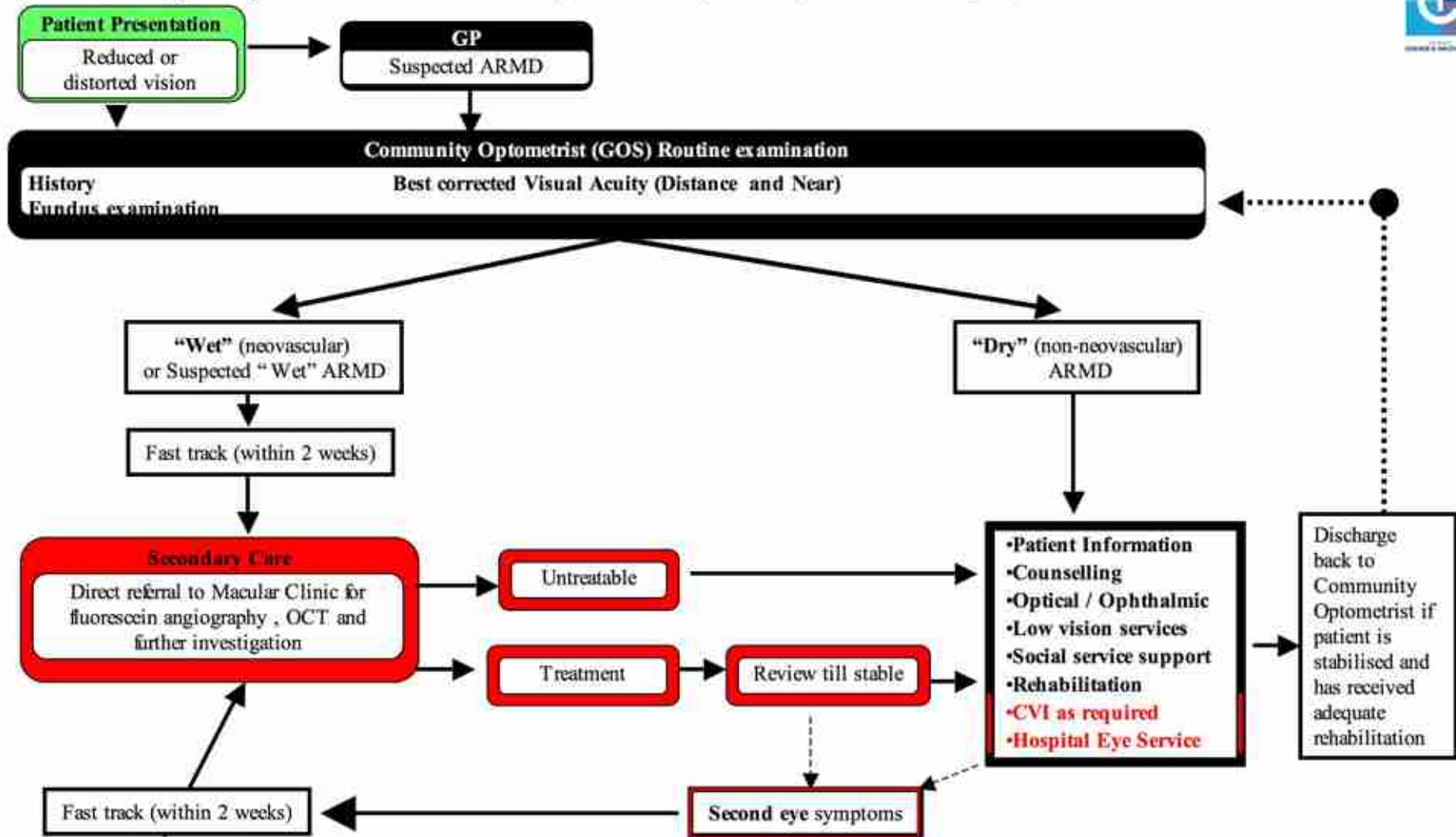


# Ophthalmology – Aged Related Macular Degeneration (ARMD) Patient Pathway Updated Jan 08



**Useful Information for Patients**

NHS24: 08454 24 24 24  
<http://macular-disease.org/>  
[www.patient.co.uk](http://www.patient.co.uk)  
[www.visibility.org.uk](http://www.visibility.org.uk)  
[www.mib.org.uk](http://www.mib.org.uk)

- Patient
- Primary Care
- Secondary Care

It is generally accepted that the risk of developing neovascular AMD in the second eye is 40% at five years. A simplified clinical scale\* may be used to define risk categories for a person to develop advanced AMD (neovascular AMD or geographic atrophy involving the central macula)

\*A simplified severity scale for age-related macular degeneration: AREDS report No.18. Age-Related Eye Disease Study Research Group. Arch Ophthalmol 2005;123(11):1570-4. [cited 18 Jan 2008] Available from url <http://archophth.ama-assn.org/cgi/content/full/123/11/1570>